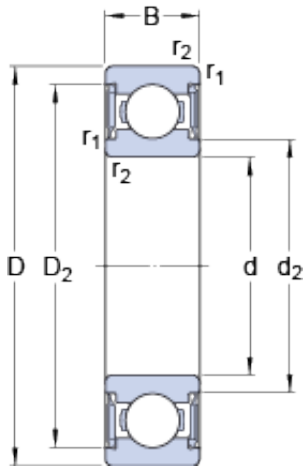




# USK BEARING COMPANY



12 mm x 21 mm x 7 mm skf W 63801-2RS1  
Deep groove ball bearings

Bearing No. W 63801-2RS1

W 63801-2RS1 Bearing 2D drawings and 3D CAD models

Size	21x12x7 mm
Bore Diameter	12 mm
Outer Diameter	12 mm
Width	7 mm
d	12 mm
D	21 mm
B	7 mm
d <sub>2</sub>	13.8 mm
D <sub>2</sub>	19.15 mm
r <sub>1,2</sub> - min.	0.3 mm
d <sub>a</sub> - min.	13.5 mm
d <sub>a</sub> - max.	13.5 mm
D <sub>a</sub> - max.	19.5 mm
r <sub>a</sub> - max.	0.3 mm
Basic dynamic load rating - C	1.5 kN
Basic static load rating - C <sub>0</sub>	0.9 kN
Fatigue load limit - P <sub>u</sub>	0.039 kN
Limiting speed	20000 r/min
Calculation factor - k <sub>r</sub>	0.02
Calculation factor - f <sub>0</sub>	13.4
d <sub>2</sub>	13.8 mm
D <sub>2</sub>	19.15 mm
r <sub>1,2</sub> min.	0.3 mm
d <sub>a</sub> min.	13.5 mm



## USK BEARING COMPANY

$d_a$ max.	13.5 mm
$D_a$ max.	19.5 mm
$r_a$ max.	0.3 mm
Basic dynamic load rating C	1.51 kN
Basic static load rating $C_0$	0.9 kN
Fatigue load limit $P_u$	0.039 kN
Calculation factor $k_r$	0.02
Calculation factor $f_0$	13.4
Mass bearing	0.0082 kg